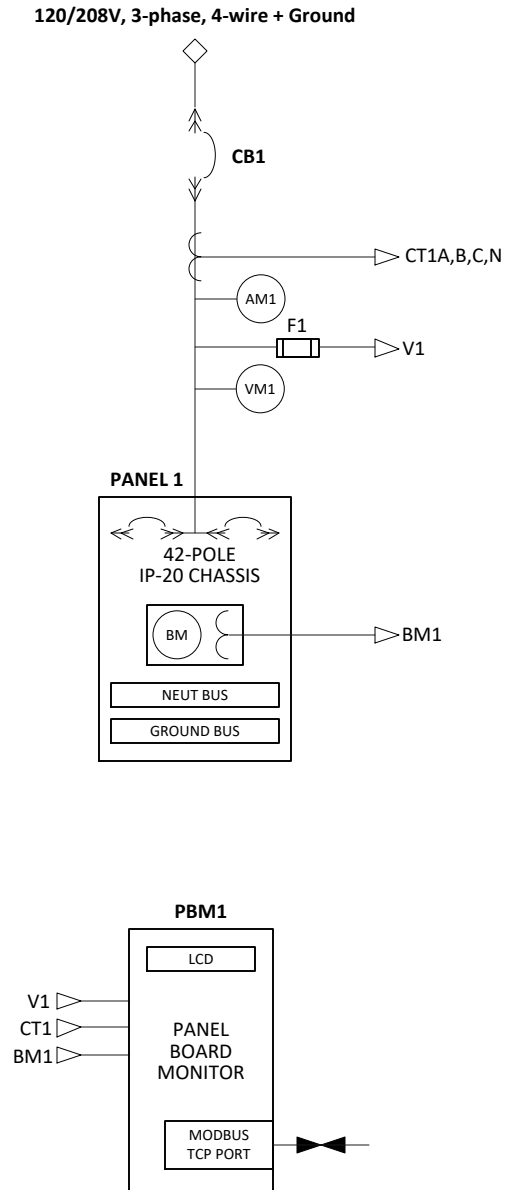


**Series 70 eRPP-SL1**  
**Mains and Branch Circuit Monitoring (MCM and BCM)**



<b>INPUT TERMINALS</b> (Two-hole Compression Lug Terminals)	
PHASE RATING (A,B,C)	400A
NEUTRAL RATING (N)	400A
GROUND RATING (G)	400A

<b>CIRCUIT BREAKER DATA</b>	
REF NO	CB1
TYPE	Electronic Trip (LS/I)
RATING	400AF / 400AT, 100%
WITHSTAND	65kAIC @ 240VAC (per UL ratings)
MOUNTING	Plug-in
SHUNT TRIPS	No
AUX CONTACTS	No
MANUFACTURER	ABB
BREAKER SERIES	Tmax T5

<b>PANEL BOARD DATA</b>	
PHASE RATING (A,B,C)	400A
NEUTRAL RATING (N)	400A
GROUND RATING (G)	400A

**ADDITIONAL INFORMATION:**

- Neutral Monitoring
- Branch CT Ratings: 60A only
- Display Type: Advanced: 800x600 pixels, 16-bit color

<b>LEGEND</b>	
	CURRENT METERING POINT
	VOLTAGE METERING POINT
	BRANCH CURRENT MONITOR
PBM PANEL BOARD MONITOR WITH ETHERNET PROVISION	
PANEL BOARD MONITOR SENSING SIGNAL	

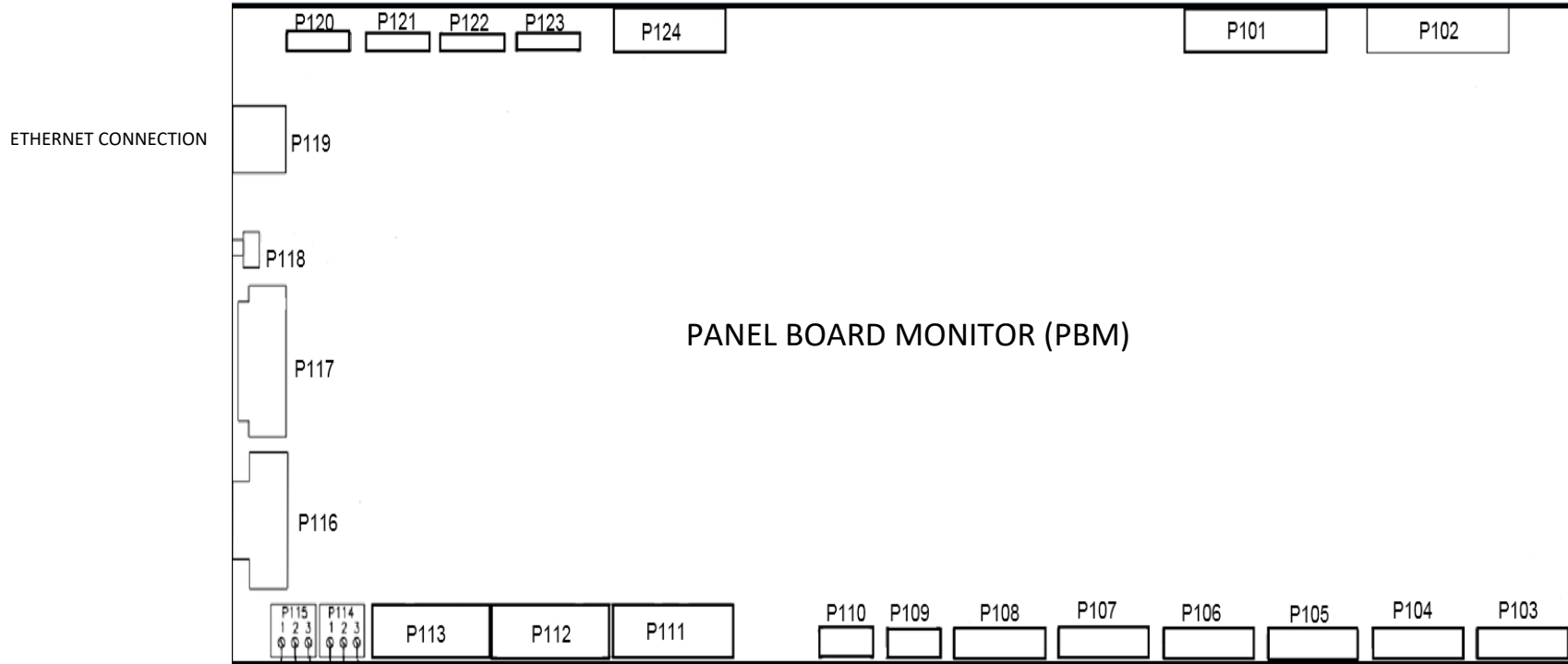
		PAGE DESCRIPTION		
		ONE LINE DIAGRAM, eRPP-SL1		
JOB	DRAWN	DATE 6/16/2023	DWG NO	REV
	CHK	DATE	eRPPSL1000066	A
	APPR	DATE	SHEET 1 OF 2	

**FOR QUOTATION ONLY – NOT FOR PRODUCTION**

# PANEL BOARD MONITOR (PBM)



SYMBOL FOR CLOSED CONTACTS



P115  
SUMMARY ALARM

SUMMARY ALARM



NO SUMMARY ALARM



NOTES:

1. TERMINAL NUMBERS REFER TO TERMINALS ON PANEL BOARD MONITOR (PBM). THE PBM IS LOCATED IN THE CONTROLS/MONITORING SECTION. REFER TO THE MECHANICAL OUTLINE DRAWING FOR EXACT LOCATION.
2. TERMINALS SUITABLE FOR AWG 20-16 STRANDED COPPER WIRE. MAXIMUM ONE WAY LENGTH FOR #16: 500 ft (152 m).
3. ALL WIRING TO BE IN ACCORDANCE WITH THE NATIONAL ELECTRIC CODE AND ALL LOCAL CODES. CONTROL AND STATUS WIRING MUST BE RUN AND IN SEPARATE CONDUIT FROM POWER WIRING.
4. SUMMARY ALARM CONTACTS ARE DRY, POTENTIAL-FREE CONTACTS. CUSTOMER REQUIREMENTS ARE AS FOLLOWS:
  - a. Open circuit voltage  $\leq$  120 V RMS AC.
  - b. Closed circuit current  $\leq$  1 A RMS.

			PAGE DESCRIPTION	
			ONE LINE DIAGRAM, eRPP-SL1	
JOB	DRAWN	DATE 6/16/2023	DWG NO	REV
	CHK	DATE	eRPPSL1000066	A
	APPR	DATE	SHEET 2 OF 2	