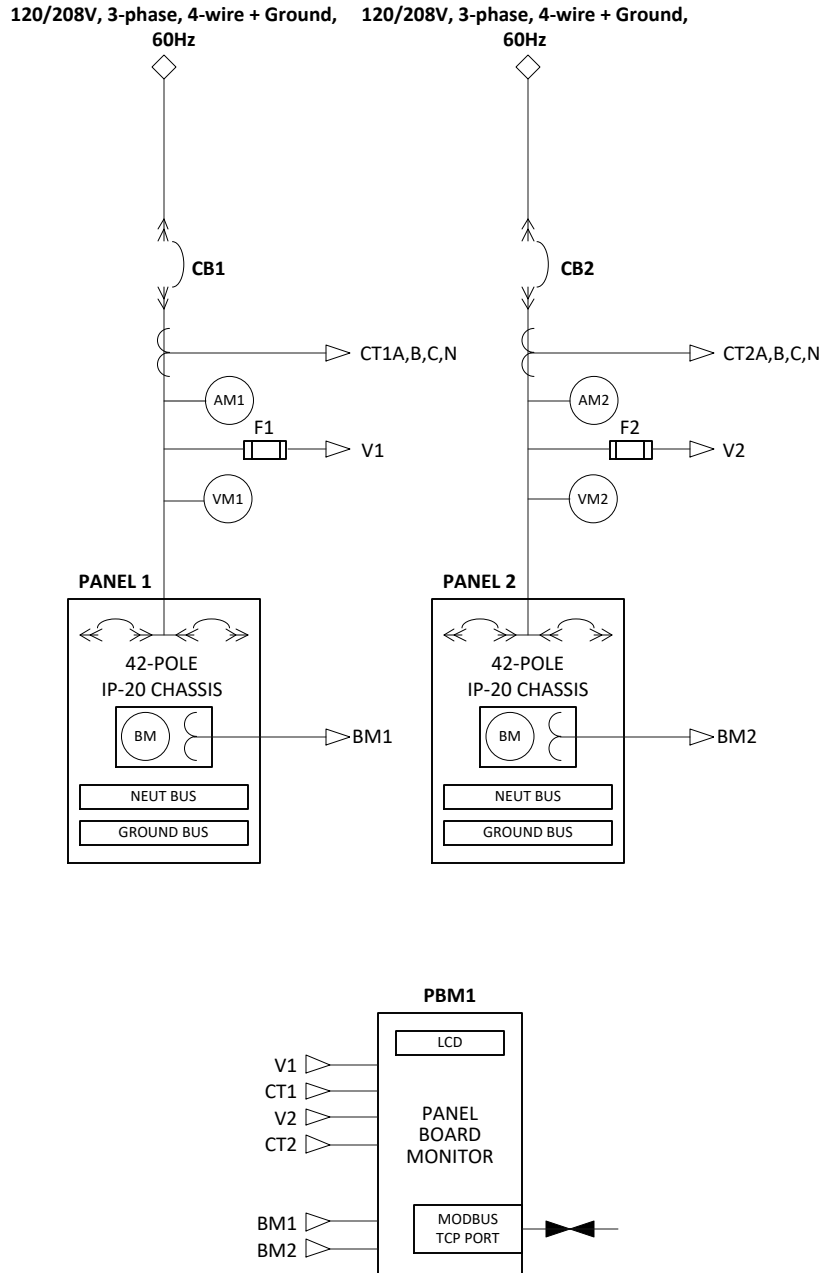


Series 70 eRPP-FSR

2-Input / 2-Panel / Dedicated (D)

Mains and Branch Circuit Monitoring (MCM and BCM)



INPUT TERMINALS (Two-hole Compression Lugs)	
PHASE RATING (A,B,C)	225A
NEUTRAL RATING (N)	225A
GROUND RATING (G)	225A

CIRCUIT BREAKER DATA	
REF NO	CB1,2
TYPE	Molded Case Switch
RATING	400AF
WITHSTAND	65kA @ 240VAC (per UL ratings)
MOUNTING	Plug-in
SHUNT TRIPS	No
AUX CONTACTS	No
MANUFACTURER	ABB
BREAKER SERIES	Tmax T5

PANEL BOARD DATA	
PHASE RATING (A,B,C)	225A
NEUTRAL RATING (N)	225A
GROUND RATING (G)	225A

ADDITIONAL INFORMATION:

- Neutral Monitoring
- Branch CT Ratings: 60A only
- Display Type: Advanced: 800x600 pixels, 16-bit color

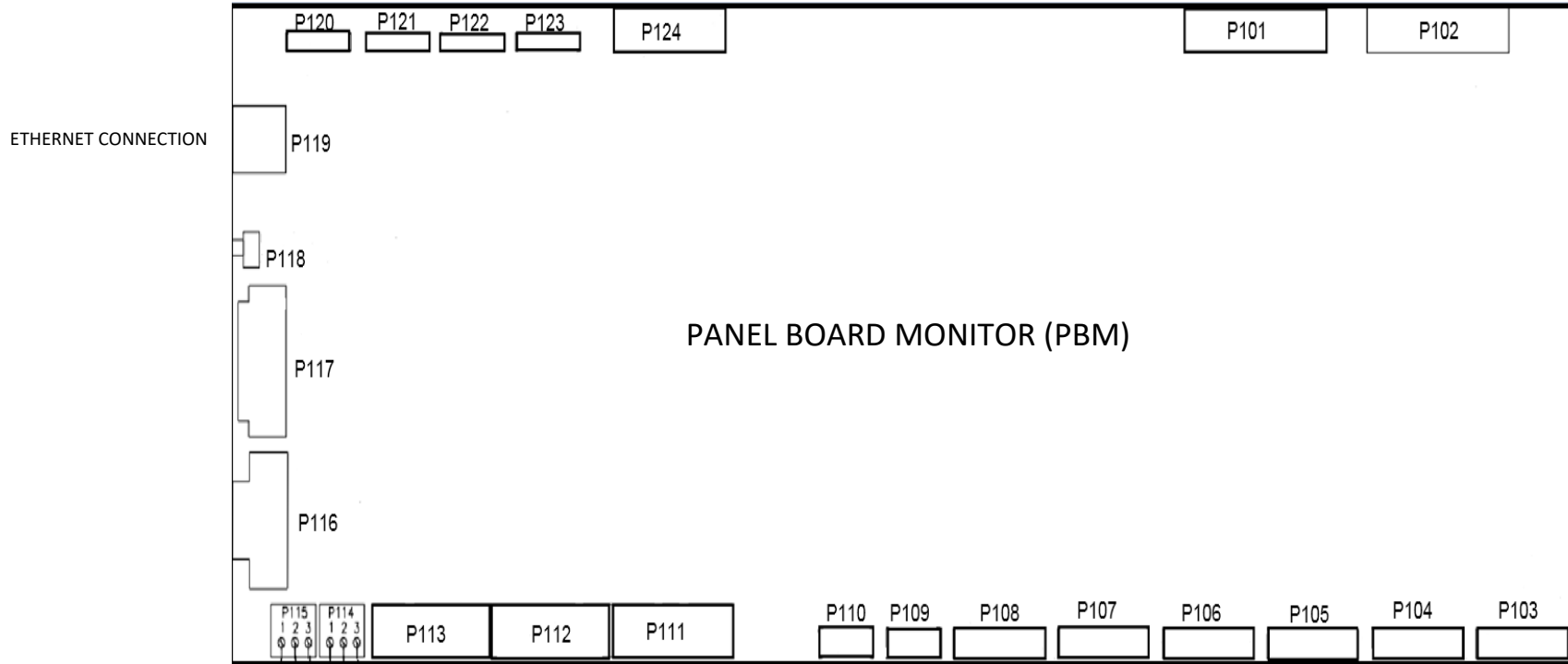
LEGEND	
	CURRENT METERING POINT
	VOLTAGE METERING POINT
	BRANCH CURRENT MONITOR
	PANEL BOARD MONITOR WITH ETHERNET PROVISION
	PANEL BOARD MONITOR SENSING SIGNAL

		PAGE DESCRIPTION		
		ONE LINE DIAGRAM, eRPP-FSR		
JOB	DRAWN	DATE 6/20/2023	DWG NO	REV
	CHK	DATE	eRPPFSR000148	A
	APPR	DATE	SHEET 1 OF 2	

PANEL BOARD MONITOR (PBM)



SYMBOL FOR CLOSED CONTACTS



PANEL BOARD MONITOR (PBM)

P115
SUMMARY ALARM

SUMMARY ALARM



NO SUMMARY ALARM



NOTES:

1. TERMINAL NUMBERS REFER TO TERMINALS ON PANEL BOARD MONITOR (PBM). THE PBM IS LOCATED IN THE CONTROLS/MONITORING SECTION. REFER TO THE MECHANICAL OUTLINE DRAWING FOR EXACT LOCATION.
2. TERMINALS SUITABLE FOR AWG 20-16 STRANDED COPPER WIRE. MAXIMUM ONE WAY LENGTH FOR #16: 500 ft (152 m).
3. ALL WIRING TO BE IN ACCORDANCE WITH THE NATIONAL ELECTRIC CODE AND ALL LOCAL CODES. CONTROL AND STATUS WIRING MUST BE RUN AND IN SEPARATE CONDUIT FROM POWER WIRING.
4. SUMMARY ALARM CONTACTS ARE DRY, POTENTIAL-FREE CONTACTS. CUSTOMER REQUIREMENTS ARE AS FOLLOWS:
 - a. Open circuit voltage \leq 120 V RMS AC.
 - b. Closed circuit current \leq 1 A RMS.

		PAGE DESCRIPTION		
		ONE LINE DIAGRAM, eRPP-FSR		
		JOB	DRAWN	DATE 6/20/2023
	CHK	DATE		
	APPR	DATE	SHEET 2 OF 2	