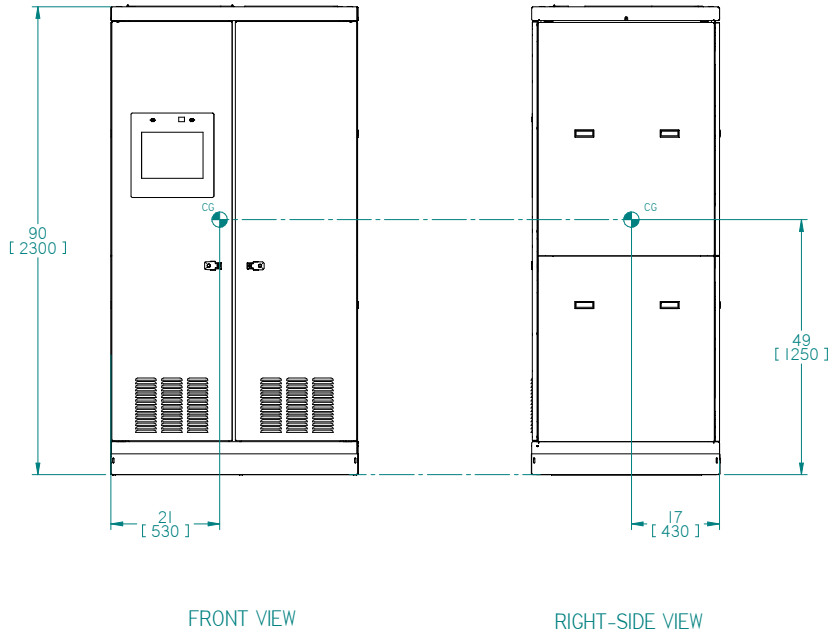
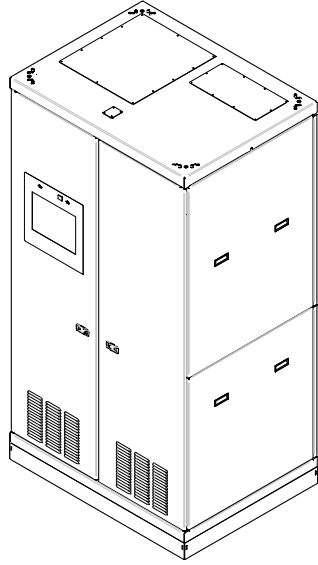
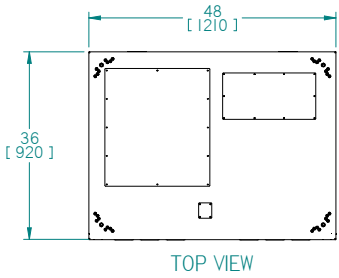


8 7 6 5 4 3 2 1

REVISIONS				
ECN	REV	DESCRIPTION	DATE	APPROVED
-	A	NEW RELEASE	10/16/2020	SPJ



**NOTES:**

1. Front access only required for operation and servicing. Use nominal clearances for back and sides of cabinet.
2. See Sheet 2 contains a descriptive index of parts
3. See Sheet 3 for details of external features and cable access areas.  
- The Optional 42-00-40764710-A Weight Distributing Base is installed at the factory. Forklift Access provided from the sides of the assembly as shown.
4. See Sheet 4 for details of internal features and cable I/O landing locations
5. See Sheet 5 for details of cable bend radii and recommended wire sizes (Table II)
6. Floor skirts (as shown on sheet II) to installed at the factory
7. See the One Line Electrical Diagram for further details.

Copyright © 2020, LayerZero Power Systems, Inc.

UNLESS OTHERWISE SPECIFIED  
DIMENSIONS ARE IN INCHES  
DIMENSIONS IN [ ] ARE IN mm  
DO NOT SCALE DRAWING

TOLERANCES:  
XX ± .03  
XXX ± .010  
ANGULAR ± 1/2

FIRST ANGLE PROJ.

**LAYERZERO**  
POWER SYSTEMS, INC.

OUTLINE, MOUNTING, INSTALLATION  
DIAGRAM SERIES 70 ESTS (2) SOURCE,  
4-POLE, 120/208VAC, 250A, SMR/TMR

DWN SPJ	DATE 10/16/2020	SIZE D	FSCM NO.	DWG NO. 94-MS-01103801	REV A
CHK DRT	DATE 10/16/2020	SCALE 1:2		94-MS-01103801-ASHTI	SHEET 1 of 5
APVD SPJ	DATE 10/16/2020				

8 7 6 5 4 3 2 1

8

7

6

5

4

3

2

1

REVISIONS				
ECN	REV	DESCRIPTION	DATE	APPROVED
-	A	NEW RELEASE	10/16/2020	SPJ

D

C

B

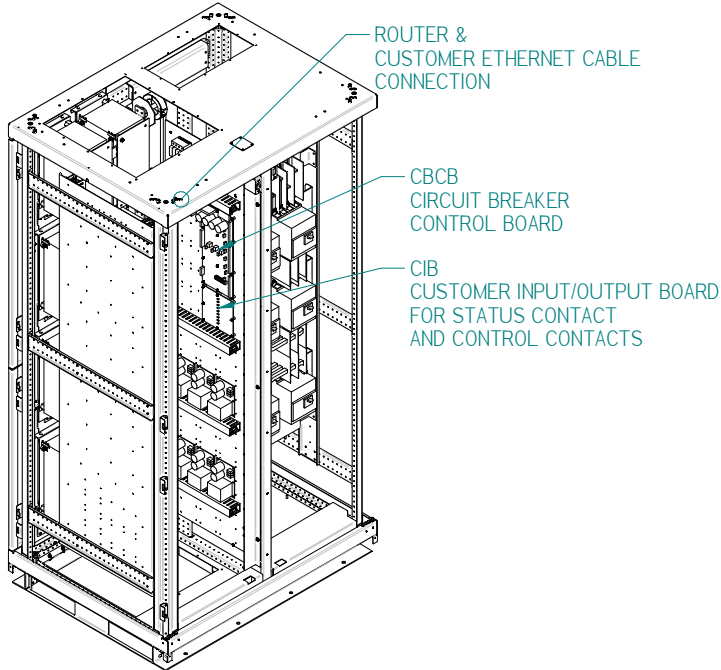
A

D

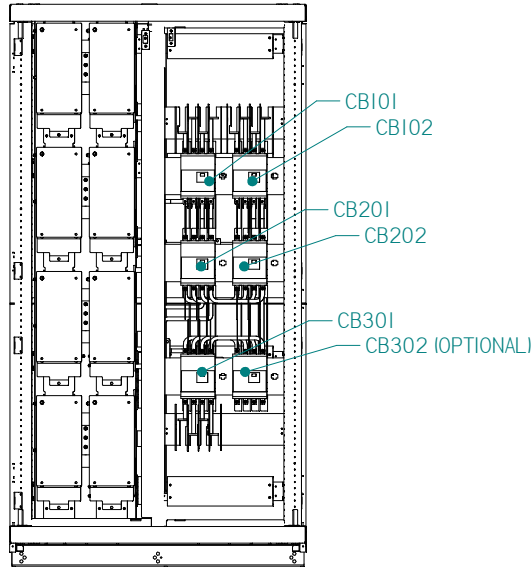
C

B

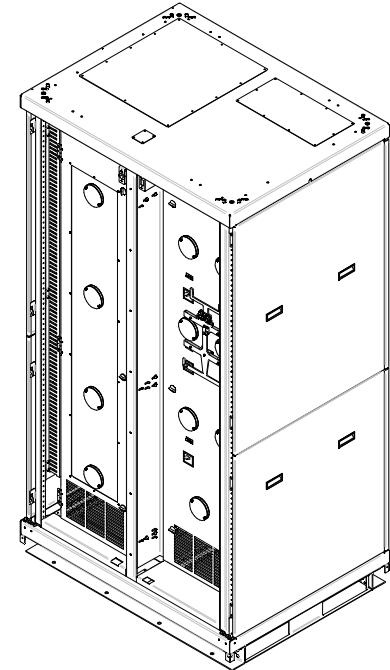
A



LEFT ISOMETRIC VIEW



FRONT VIEW



RIGHT ISOMETRIC VIEW

Copyright © 2020, LayerZero Power Systems, Inc.

UNLESS OTHERWISE SPECIFIED  
DIMENSIONS ARE IN INCHES  
DIMENSIONS IN [ ] ARE IN mm  
DO NOT SCALE DRAWING

TOLERANCES:  
XX ± .03  
XXX ± .010  
ANGULAR ± 1/2

FIRST ANGLE PROJ.

DWN SPJ DATE 10/16/2020  
CHK DRT DATE 10/16/2020  
APVD SPJ DATE 10/16/2020

SIZE: D FSCM NO. DWG NO. 94-MS-01103801 REV A

SCALE: 1:8 94-MS-01103801-ASHT2 SHEET 2 of 5

**LAYERZERO**  
POWER SYSTEMS, INC.

OUTLINE, MOUNTING, INSTALLATION  
DIAGRAM SERIES 70 ESTS (2) SOURCE,  
4-POLE, 120/208VAC, 250A, SMR/TMR

8

7

6

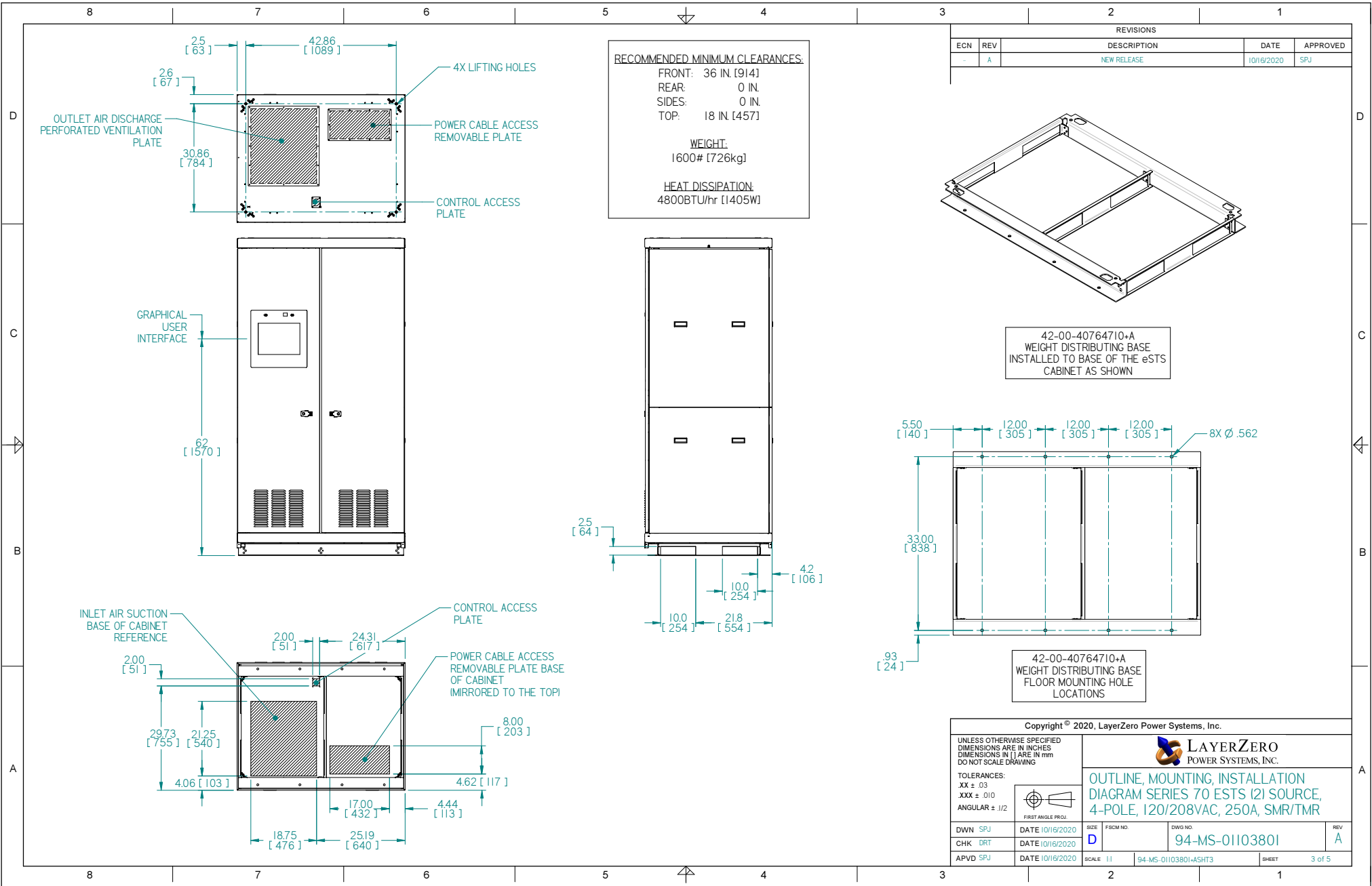
5

4

3

2

1



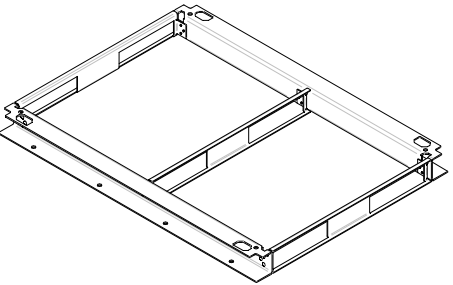
**RECOMMENDED MINIMUM CLEARANCES:**

FRONT: 36 IN. [914]  
 REAR: 0 IN.  
 SIDES: 0 IN.  
 TOP: 18 IN. [457]

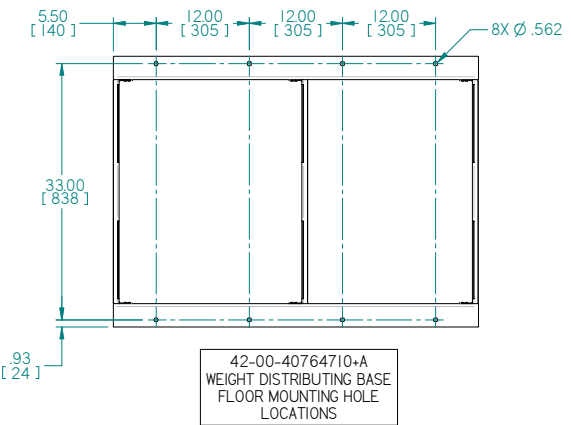
**WEIGHT:**  
 1600# [726kg]

**HEAT DISSIPATION:**  
 4800BTU/hr [1405W]

REVISIONS				
ECN	REV	DESCRIPTION	DATE	APPROVED
-	A	NEW RELEASE	10/16/2020	SPJ



42-00-40764710+A  
 WEIGHT DISTRIBUTING BASE  
 INSTALLED TO BASE OF THE eSTS  
 CABINET AS SHOWN



Copyright © 2020, LayerZero Power Systems, Inc.

UNLESS OTHERWISE SPECIFIED  
 DIMENSIONS ARE IN INCHES  
 DIMENSIONS IN [ ] ARE IN mm  
 DO NOT SCALE DRAWING

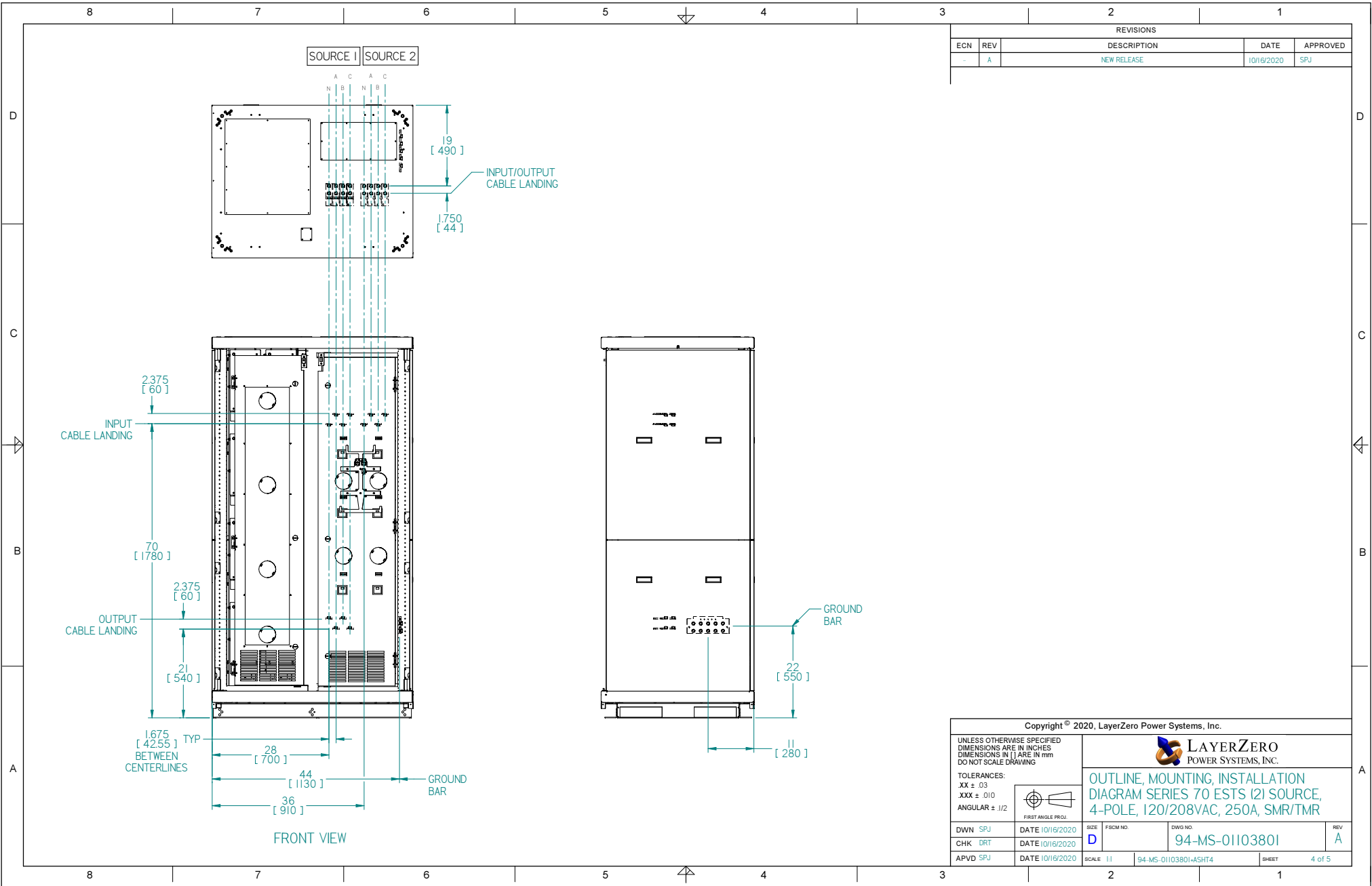
TOLERANCES:  
 XX ± .03  
 XXX ± .010  
 ANGULAR ± 1/2

FIRST ANGLE PROJ.

**LAYERZERO**  
 POWER SYSTEMS, INC.

OUTLINE, MOUNTING, INSTALLATION  
 DIAGRAM SERIES 70 eSTS (2) SOURCE,  
 4-POLE, 120/208VAC, 250A, SMR/TMR

DWN SPJ	DATE 10/16/2020	SIZE D	FSCM NO.	DWG NO.	REV A
CHK DRT	DATE 10/16/2020	94-MS-01103801			
APVD SPJ	DATE 10/16/2020	SCALE 1:1	94-MS-01103801-ASH3	SHEET	3 of 5



REVISIONS				
ECN	REV	DESCRIPTION	DATE	APPROVED
-	A	NEW RELEASE	10/16/2020	SPJ

Copyright © 2020, LayerZero Power Systems, Inc.

UNLESS OTHERWISE SPECIFIED  
DIMENSIONS ARE IN INCHES  
DIMENSIONS IN [ ] ARE IN mm  
DO NOT SCALE DRAWING

TOLERANCES:  
XX ± .03  
XXX ± .010  
ANGULAR ± 1/2

FIRST ANGLE PROJ.

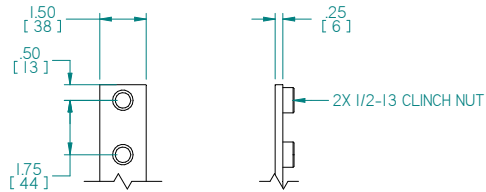
**LAYERZERO**  
POWER SYSTEMS, INC.

OUTLINE, MOUNTING, INSTALLATION  
DIAGRAM SERIES 70 ESTS (2) SOURCE,  
4-POLE, 120/208VAC, 250A, SMR/TMR

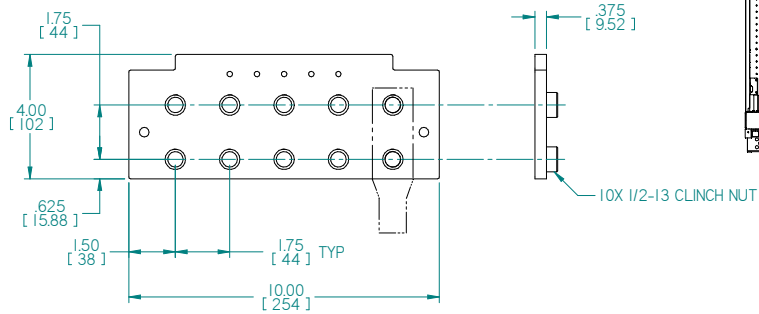
DWN SPJ	DATE 10/16/2020	SIZE D	FSCM NO.	DWG NO. 94-MS-01103801	REV A
CHK DRT	DATE 10/16/2020	SCALE 1:1	94-MS-01103801-ASHT4	SHEET 4 of 5	
APVD SPJ	DATE 10/16/2020				

TABLE I Compression lugs for Source 1 & 2 Input Phases and Ground lugs provided by others			
DESCRIPTION	CABLE SIZE AND LUGS		
	RECOMMENDED COPPER WIRE SIZE (75 °C WIRE MIN)	RECOMMENDED ALUMINUM WIRE SIZE (75 °C WIRE MIN)	LUG TYPE & SIZE (75 °C WIRE MIN)
SOURCE INPUT / OUTPUT PHASES	(1) 250 - 350 MCM (2) 1/0 AWG - 350 MCM	(1) 350 MCM (2) 3/0 AWG - 350 MCM	NEMA 2-HOLE (1/2" DIA) ON 1-3/4" CENTER BUS LANDING
GROUND BUS (COMBINED SOURCE INPUT & OUTPUT)	#6 AWG - 250 MCM UP TO (10)	#6 AWG - 250 MCM UP TO (10)	NEMA 2-HOLE (1/2" DIA) ON 1-3/4" CENTER BUS LANDING
CONTROL WIRE	16-20 AWG STRANDED	N/A	NOT REQUIRED

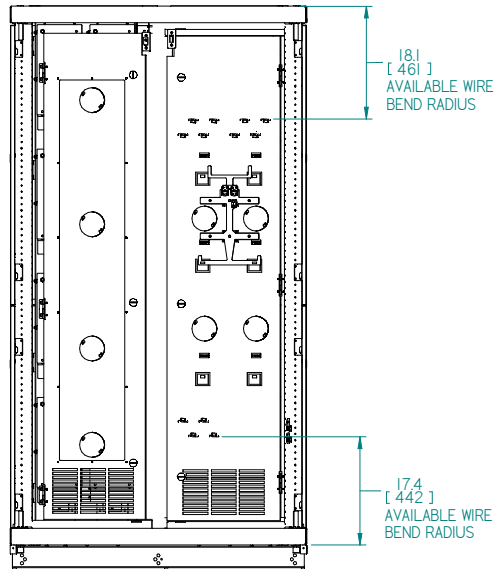
REVISIONS				
ECN	REV	DESCRIPTION	DATE	APPROVED
-	A	NEW RELEASE	10/16/2020	SPJ



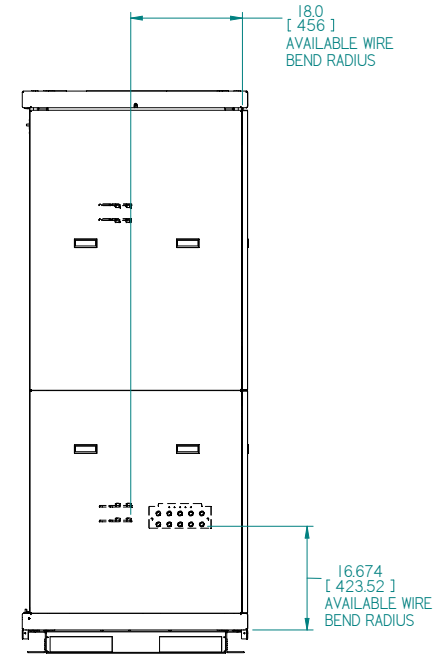
SOURCE 1 & 2  
PHASE INPUT/OUTPUT TERMINALS  
SCALE 1:2



GROUND TERMINAL  
SCALE 1:2



FRONT VIEW



Copyright © 2020, LayerZero Power Systems, Inc.

UNLESS OTHERWISE SPECIFIED  
DIMENSIONS ARE IN INCHES  
DIMENSIONS IN [ ] ARE IN mm  
DO NOT SCALE DRAWING

TOLERANCES:  
XX ± .03  
XXX ± .010  
ANGULAR ± 1/2

FIRST ANGLE PROJ.

DWN SPJ DATE 10/16/2020  
CHK DRT DATE 10/16/2020  
APVD SPJ DATE 10/16/2020

SIZE D FSCM NO. DWG NO. 94-MS-01103801 REV A

SCALE 1:2 SHEET 5 of 5

OUTLINE, MOUNTING, INSTALLATION  
DIAGRAM SERIES 70 ESTS (2) SOURCE,  
4-POLE, 120/208VAC, 250A, SMR/TMR